



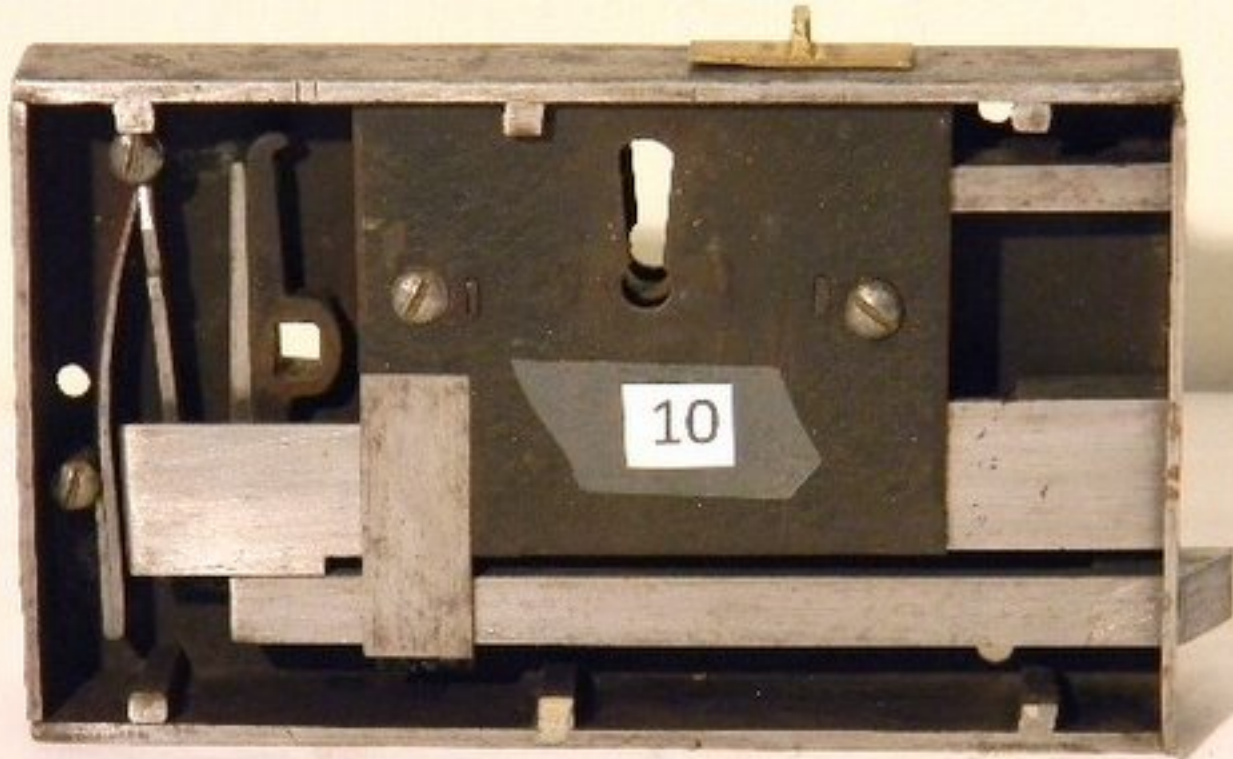




8

9





10



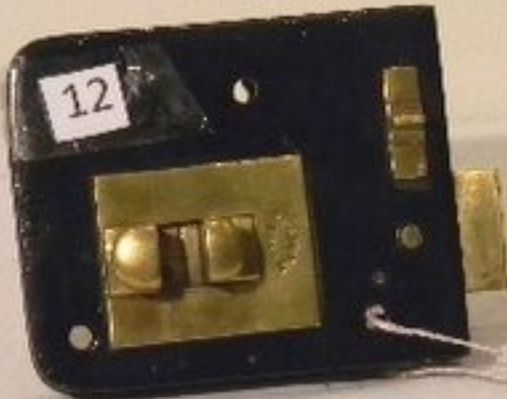
10

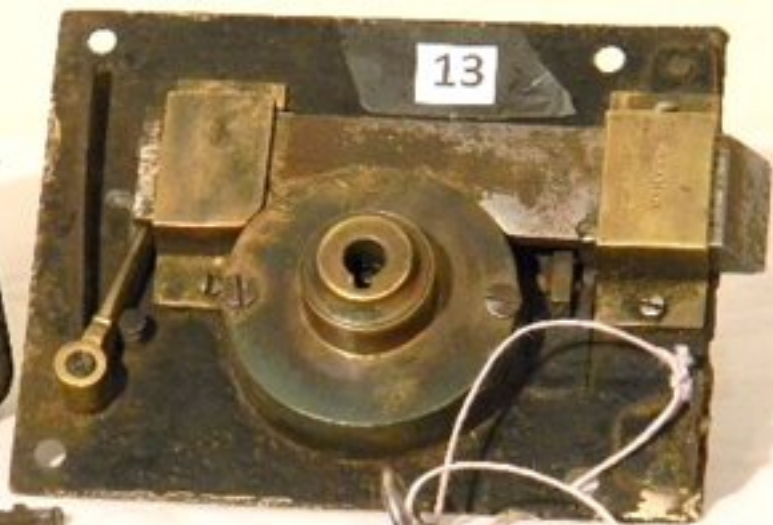
11



11

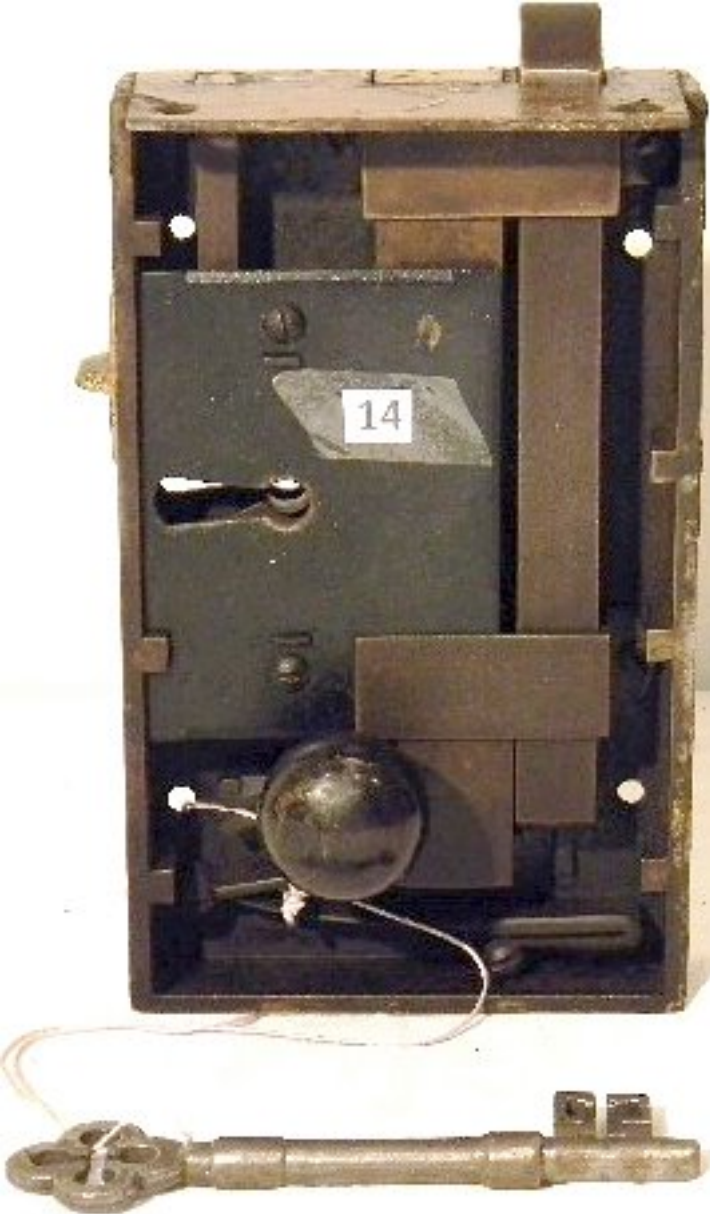




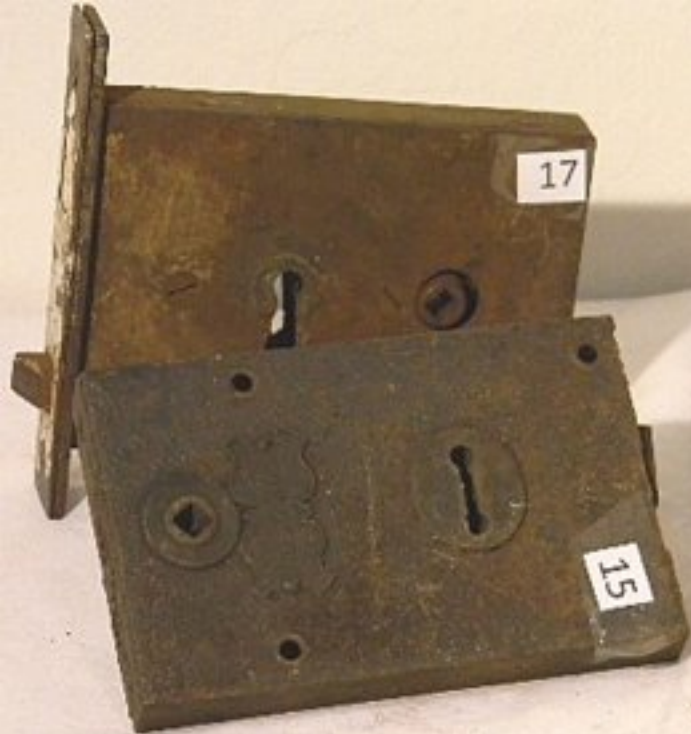


14





14







20

21

Small handwritten label on the dark metal plate.

















39





41













54



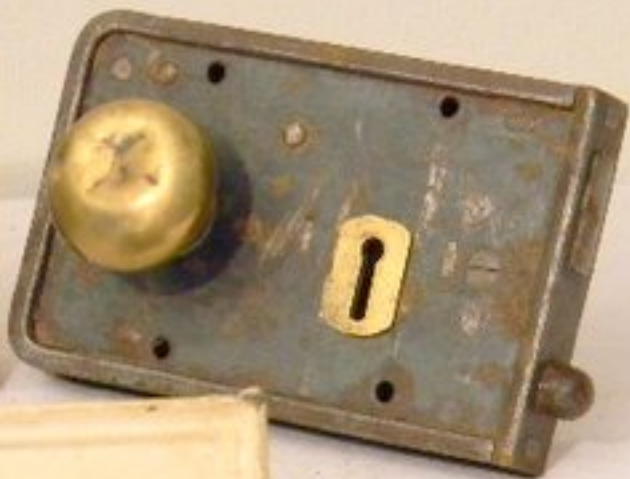
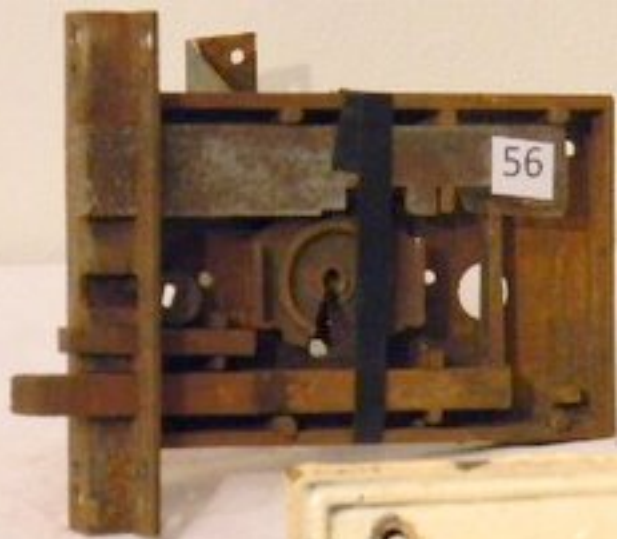
54



55







57







60



NATIONAL TIME
RECORDER CO. LEE
ST. MARY, KENT

61

62

MIDLAND
BANK

LIMITED

960076



64

VACANT

ICES PATENT

ALFRED BROWN & CO.
BIRMINGHAM

63

VACANT

PLACE
PENNY

IN SLOT AND
SLIDE KNOB



ETAS

1925

8



DISENGAGED

65

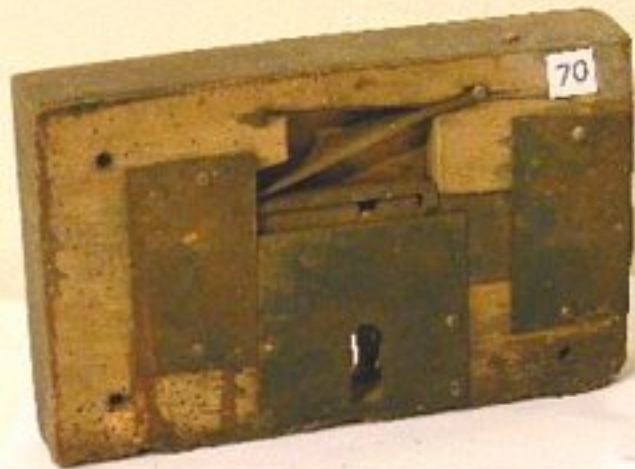
66





67



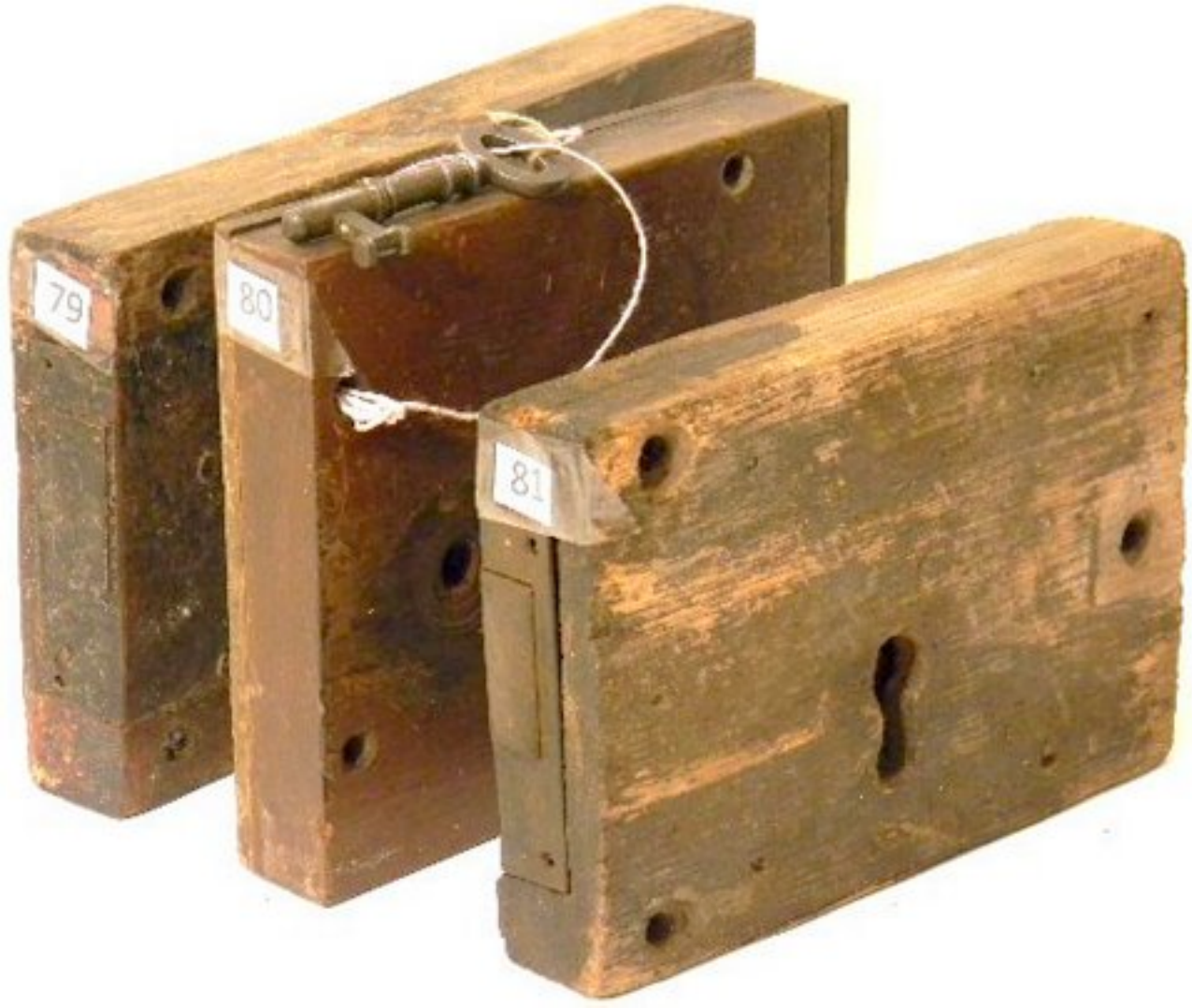


73

72





























103



105



104



106





108



108A



109



109A





110



111



112



113

114



114A



1148



115



115A



115B



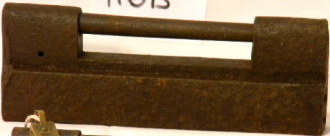


116

116A



116B



116B



116c.



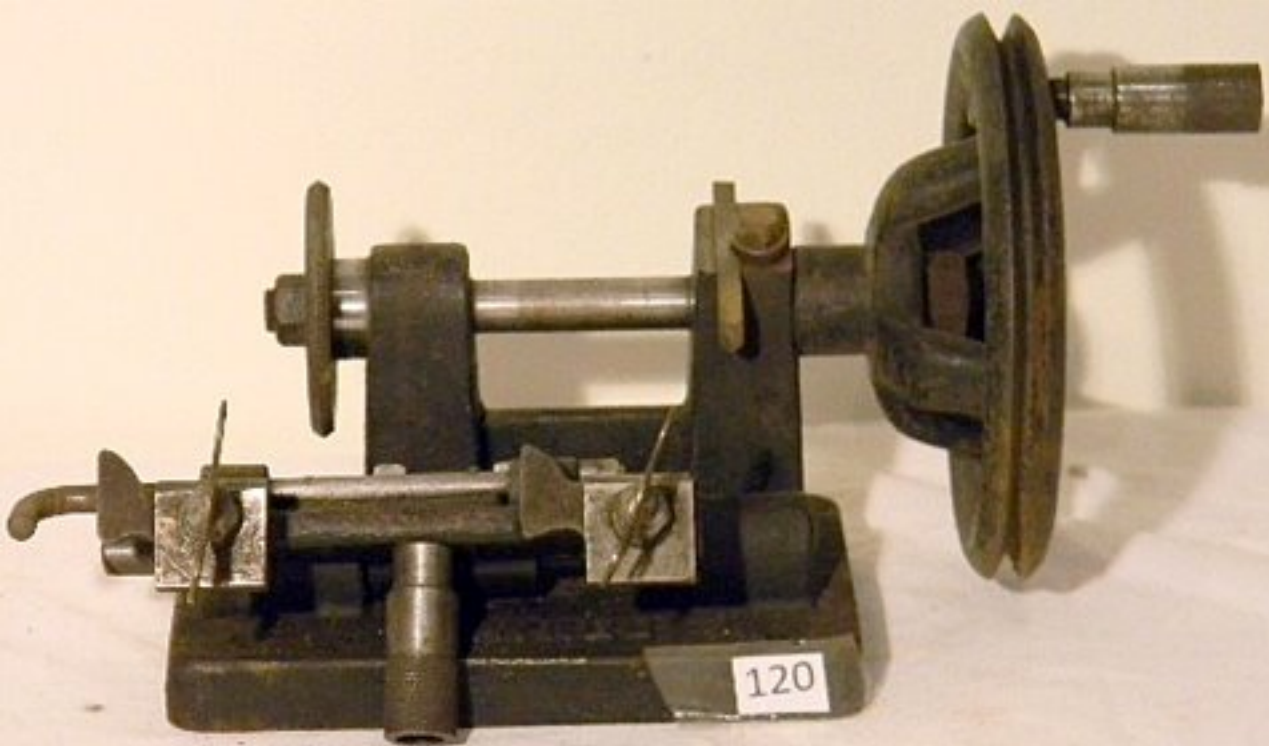
117





119





121







124



125



126



W
S
E

127



THE DART SALES CO.
TRADE MARK
& WEST BROMWICH
MANUFACTURERS

128



WHITFIELD'S
SAFE & DOOR CO.
— LIMITED. —
LONDON &
BIRMINGHAM.

129

FIRE AND THIEF RESISTING
PATENT
RATNER
LONDON
SAFE

130



BENT
STEEL

131



Handwritten tag with illegible text, possibly including "RATNER" and "LONDON".

132

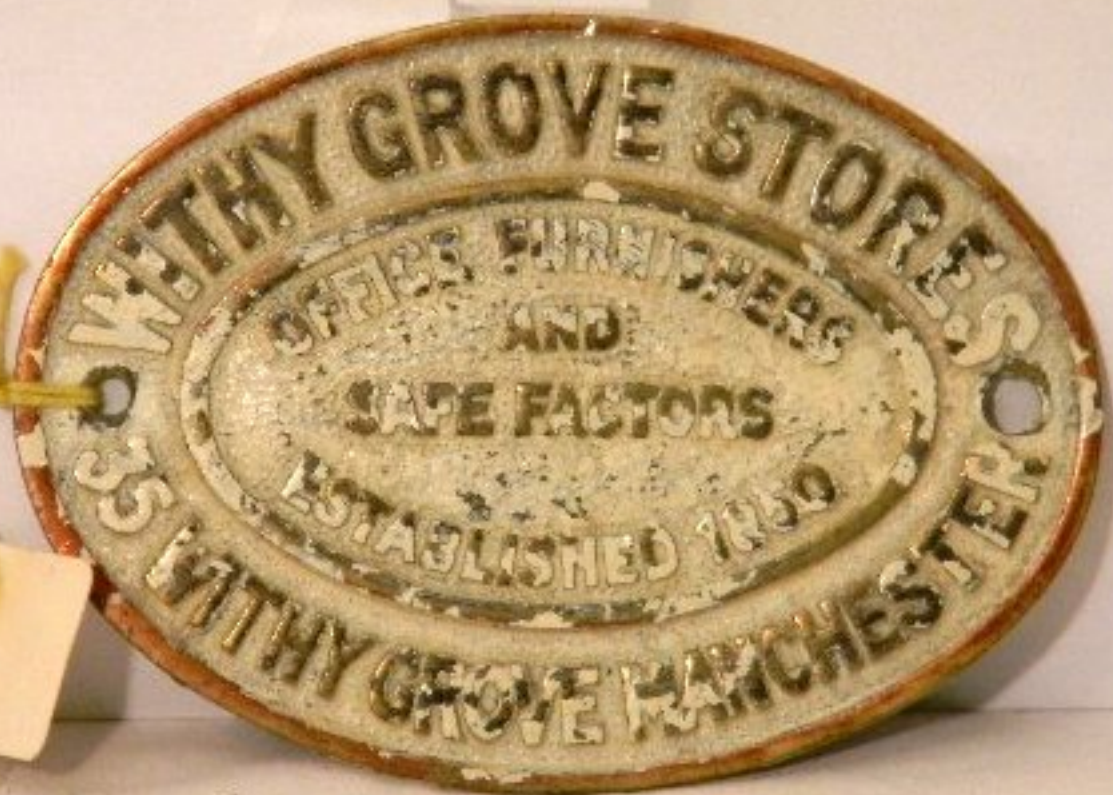


WITHEY GROVE STORES
LTD

BENT STEEL
SAFE.

MANCHESTER.

134



135



136



MIDLAND SAFE Co

BIRMINGHAM

137



138



139

PATENT

GROVE
&
SON

LOCK

PATENT

GROVE
&
SON

LOCK

140



141



MILNERS

QUADRUPLE PATENT

FIRE RESISTING

HOLDFAST

WITH POWDER PATENT

EDWARDS & DODD

LIVERPOOL &

LONDON

142

PATENT
INVIOABLE
LOCK

146



15-50
G. H. H. Co.
L. H. H. Co.

143



144



145



147



148



149



150



151





152

153





153





158

NEW YORK STATE
MUSEUM
ALBANY, N. Y.





BRAMAH
LONDON

157

179

PLEASE BOLT
THE DOOR



TOP OFFICE
OVER
ORDER OFFICE

DRAIN
ROYS
ACCUMULATOR

AUTOMATIC
CHECKS

PLEASE LEAVE KEY AT OFFICE
IF MISSING
RETURN TO
CABIN

160

CONTROL BOX
G WHITELEY

CONTROL BOX
G WHITELEY

B H C

B P C

1000
MILIM
JOB

CONTROL BOX
G WHITELEY

CONTROL BOX
G WHITELEY

161



16/A



161B



161c



161D



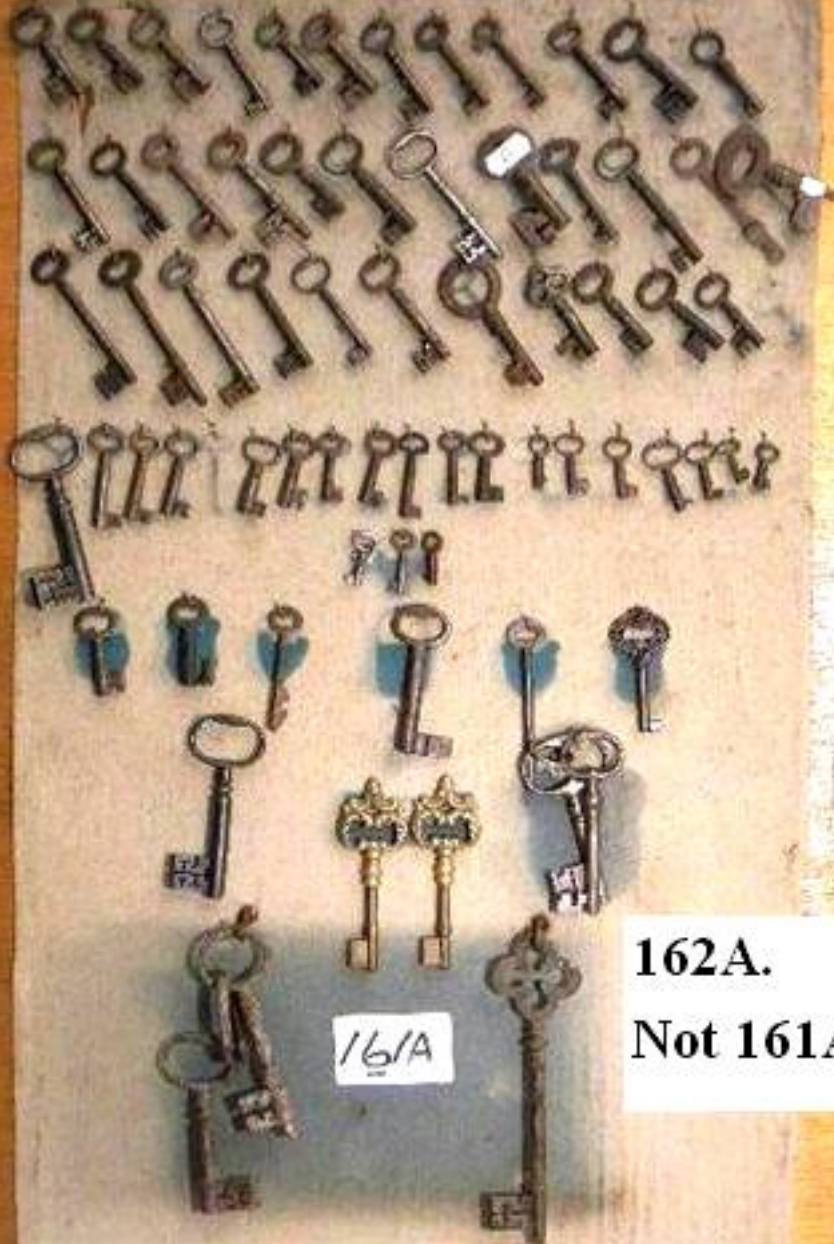


161

162

not

161



161A

162A.
Not 161A



104

The image shows a dark, heavily rusted metal plate, likely made of iron or steel, mounted on a wooden frame. The plate has a central keyhole and a horizontal bar across the middle. A small white label with the number '104' is affixed to the upper part of the plate. The metal shows significant signs of age and wear, with a mottled, brownish-black patina. The wooden frame is made of light-colored wood and has several small, dark rectangular cutouts on the right side. The entire assembly is set against a plain, light-colored background.



165







166

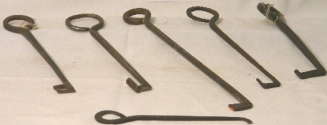
167



167A



167B



167c





167D

167E





169



167A C
P170

170





5

6

7

8

9

10

170



171

172



173

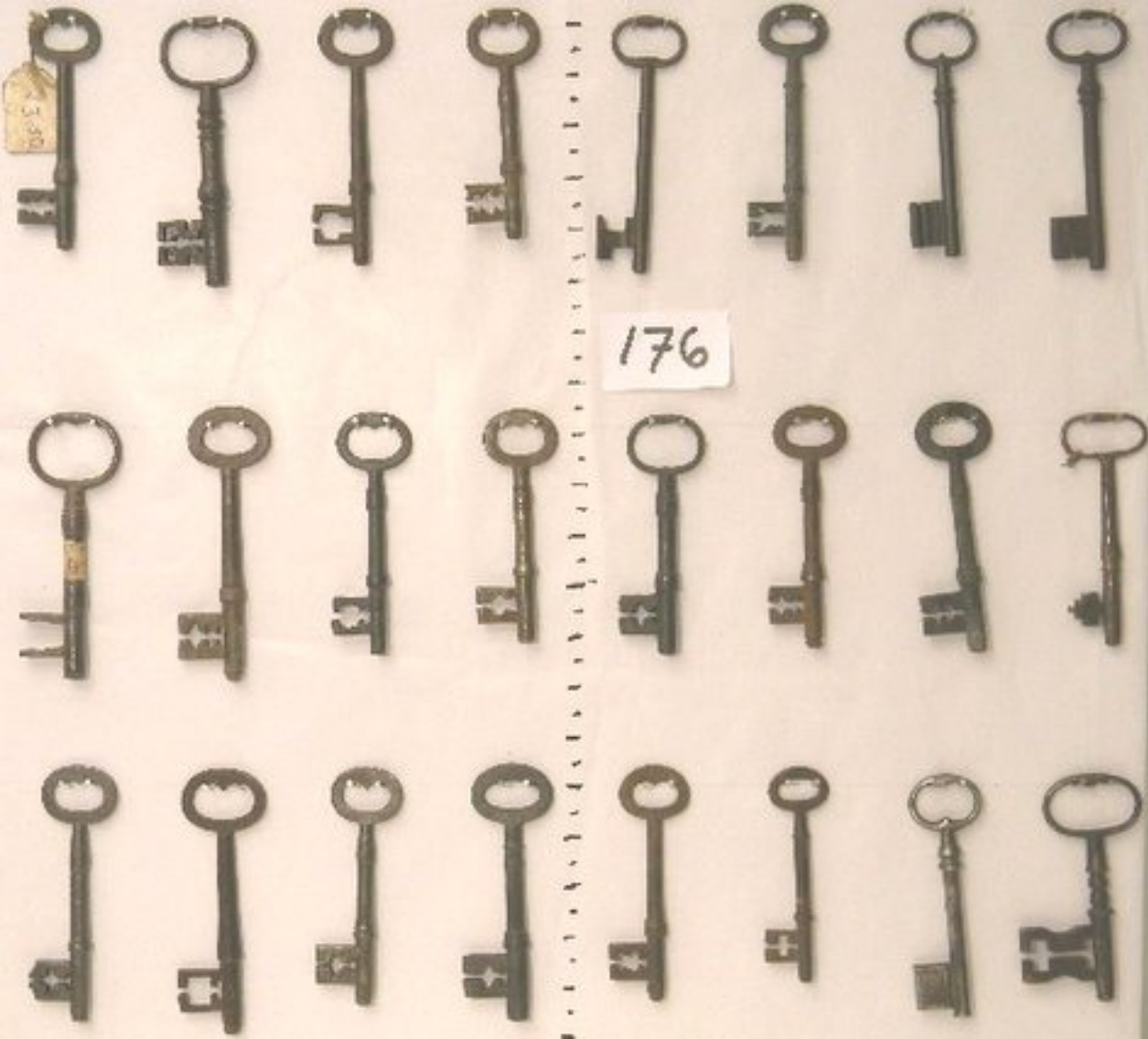




174

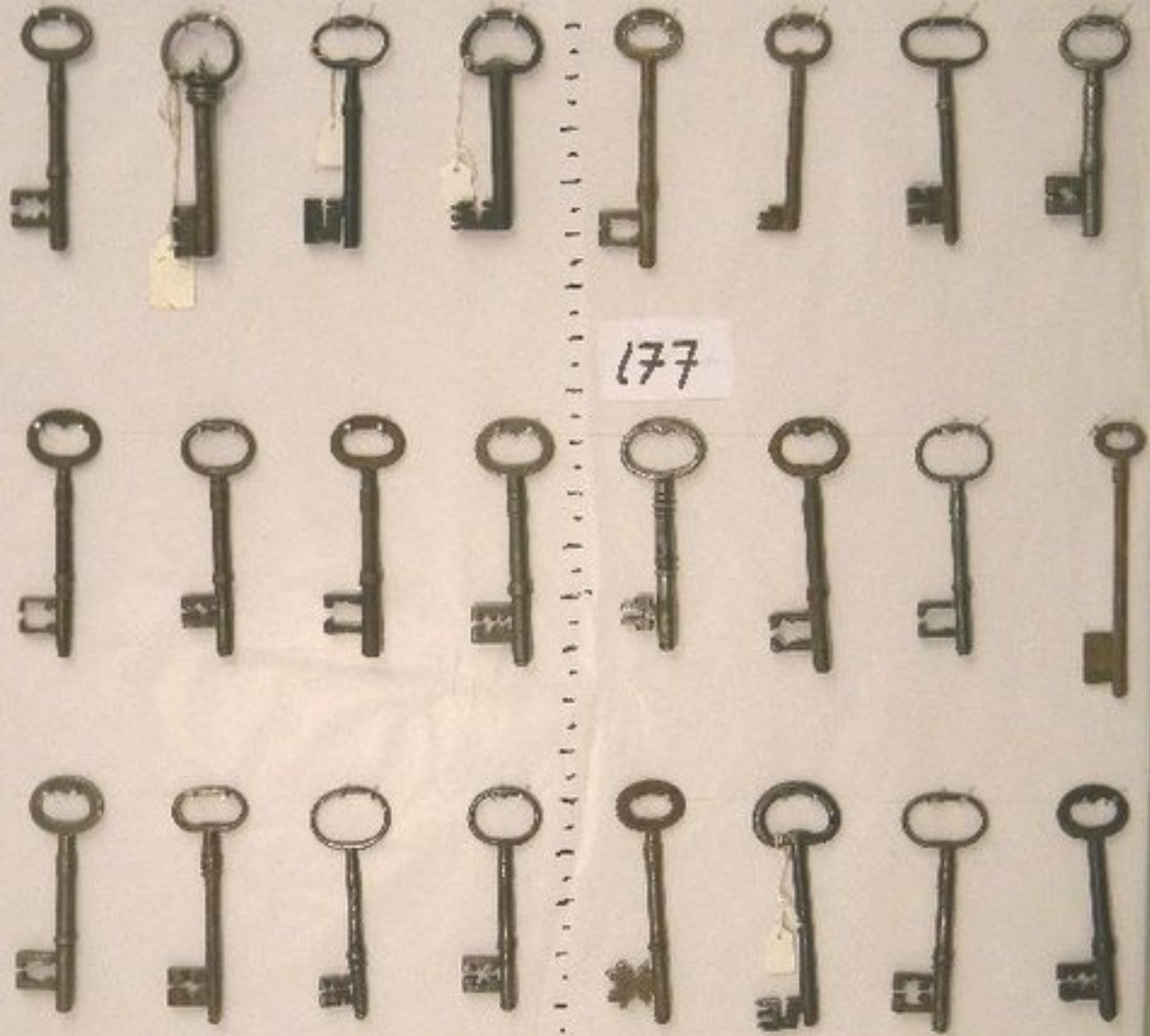


175



338

176



177



178

178

178

178

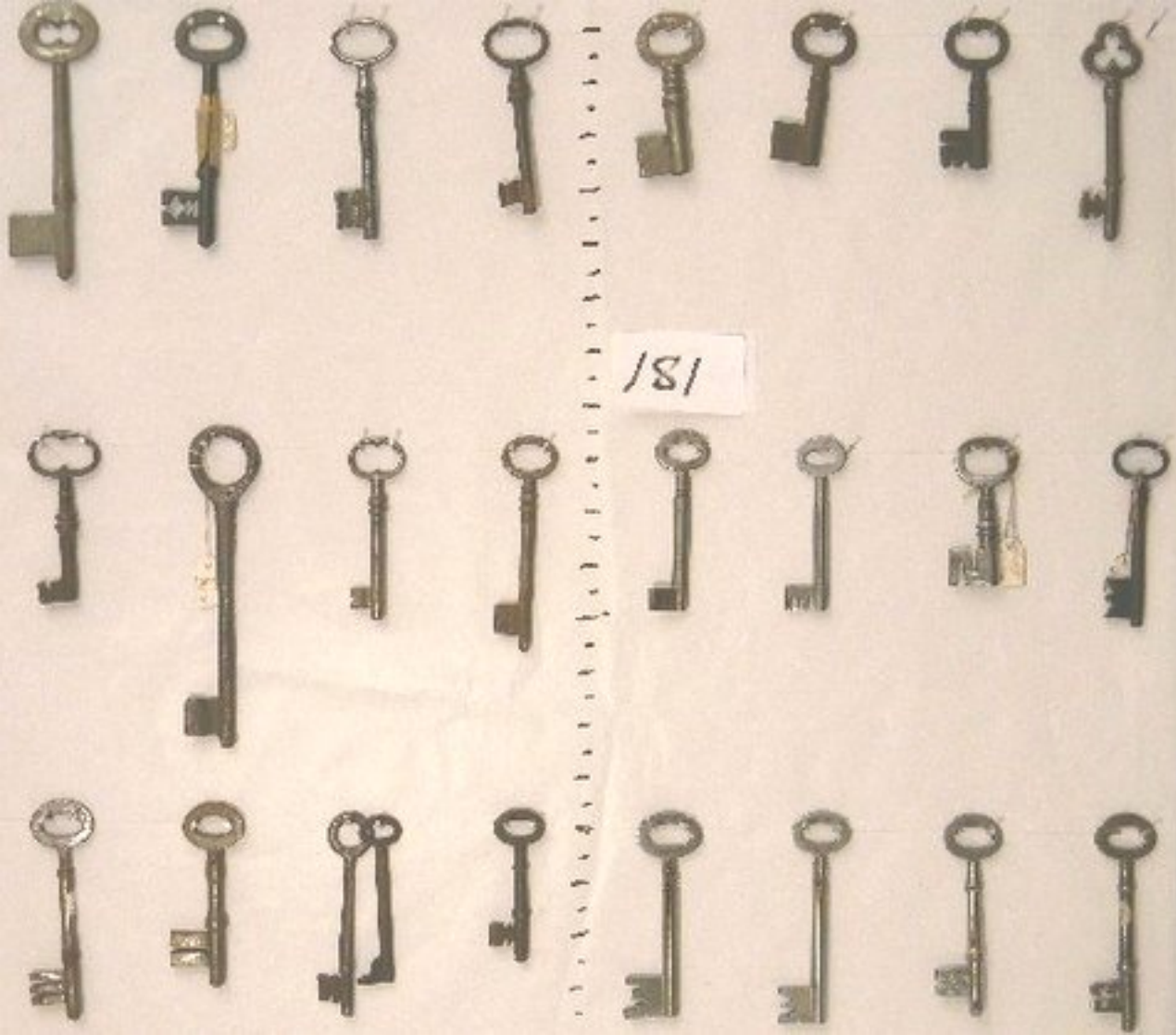


179





180



181



/83





184

11

11

11



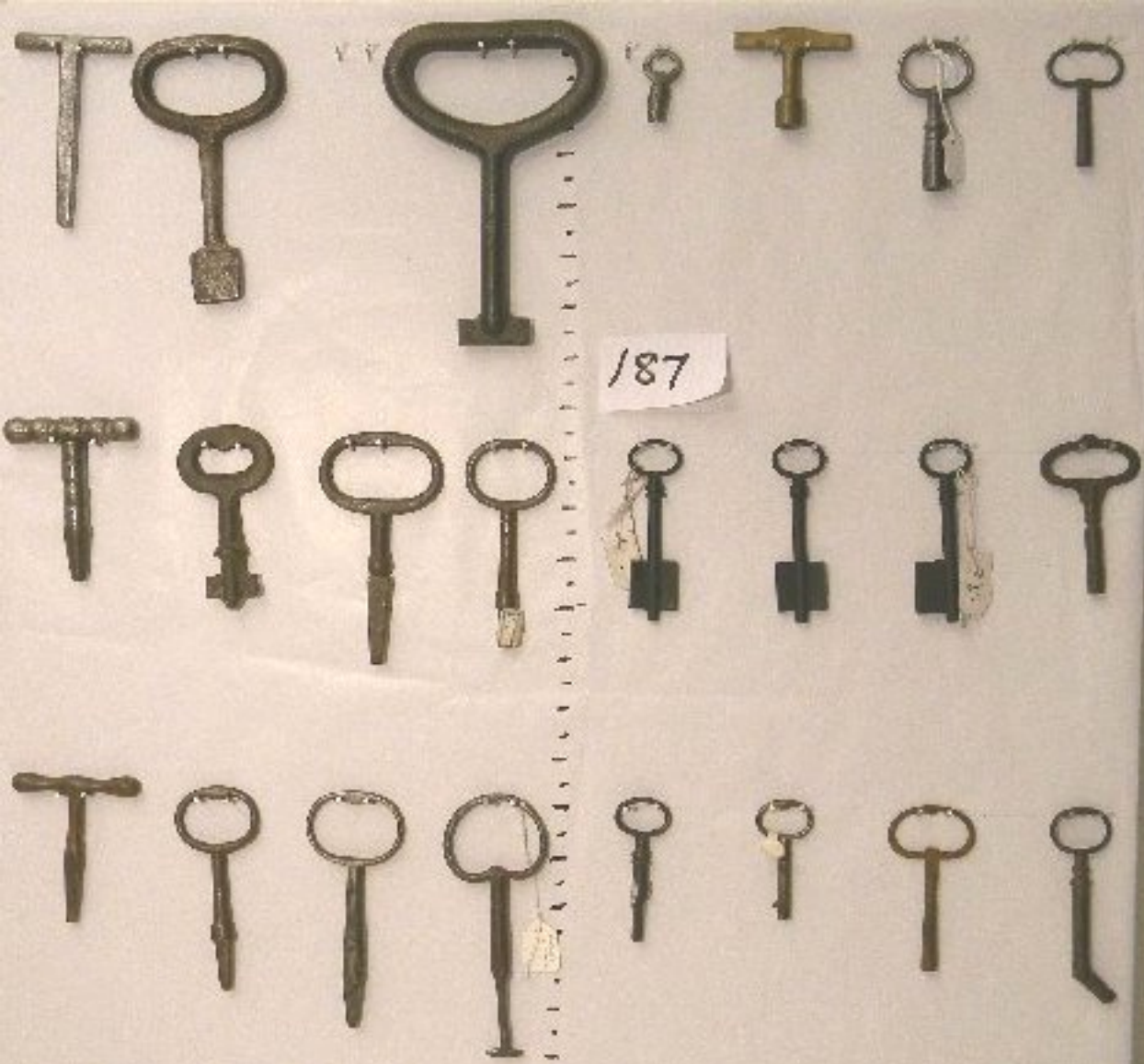
185





186

DIANO KEY



187

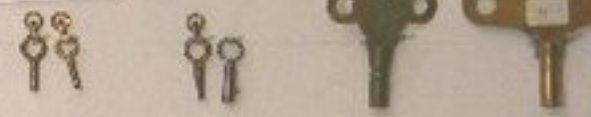


188





189





190

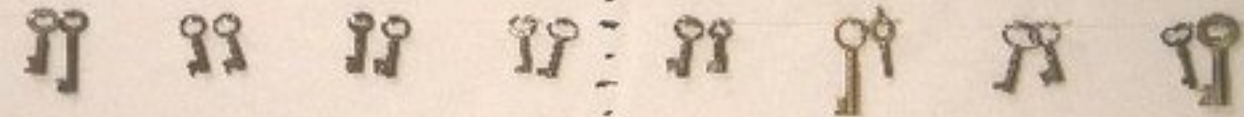
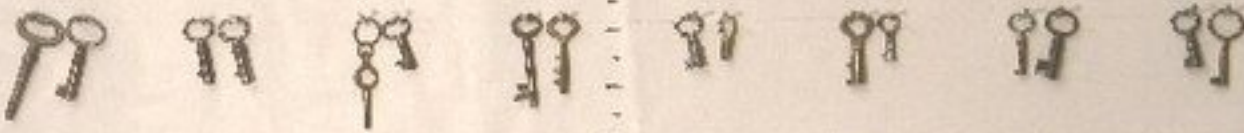


191



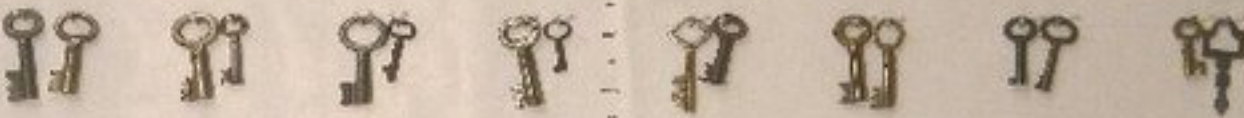


192





193





194





195



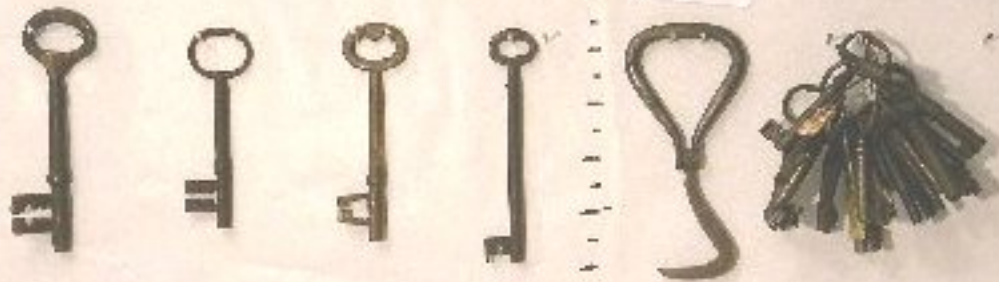


196





197



vv

vv

vv



198

vv

vv





199



200

LOCKS & KEYS
THROUGHOUT
THE AGES



HINDENT & B. BRAD

Contemporary
observations on
security from the
Chubb Collectanea
1818-1968

Noel Currer-Briggs

201

100 Years Plus of Keymaking

The History of Arthur through to Smart Lock



THE
HISTORY OF
KEYS
AND
LOCKING DEVICES

THE HISTORY OF KEYS AND LOCKING DEVICES

202

Locks and Keys throughout the World



By Wm. H. Wood

ANTIQUE LOCKS

203

Locks and Keys throughout the Ages



by Vincent J. M. Eras

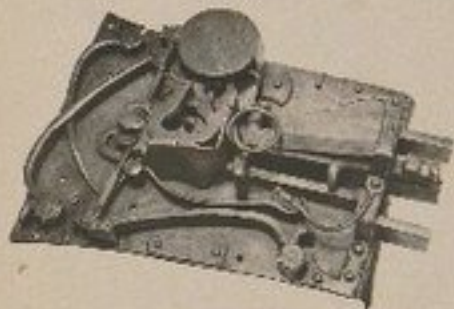
POORMAN'S
STORY
&
ORNAMENTAL
PADLOCKS

3rd
Edition



Don Stewart

HISTORY
OF
LOCKS



204

CHIAVI E SERRATURE

LOCKS AND KEYS



Blocco d'Ingegneria

PARACENTRIC

Guide to Key Collecting 2nd Edition

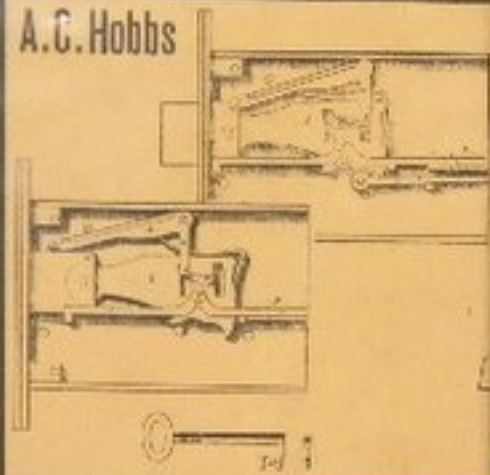
Don Stewart

205

Construction of Locks and Safes

CIRCA 1850

A. C. Hobbs



Edited by Chas. Tomlinson

1850

CONSTRUCTION OF LOCKS AND SAFES

CONSTRUCTION
OF
LOCKS & SAFES

206

KEYS

Their history and collection



Eric Monk

KEYS

Their history & collection



Eric Monk

207

Key Collectors

Key
Type
Identification
Guide

208

Don Stewart

Journal of
Collect

ISSUES 1-2006
JANUARY - FEBRUARY



Journal of Lock
Collecting

ISSUES 2007-2008
JANUARY - FEBRUARY 2007



SESAME
MAY 1950 - MAY 1951
BY LOCK 3 1950-1951

Journal of Lock
Collecting

ISSUES 2009-2010
JANUARY - FEBRUARY 2009



Journal of Lock
Collecting

ISSUES 2011-2012
JANUARY - FEBRUARY 2011



209

Journal of Lock
Collecting

ISSUES 2013-2014
JANUARY - FEBRUARY 2013

